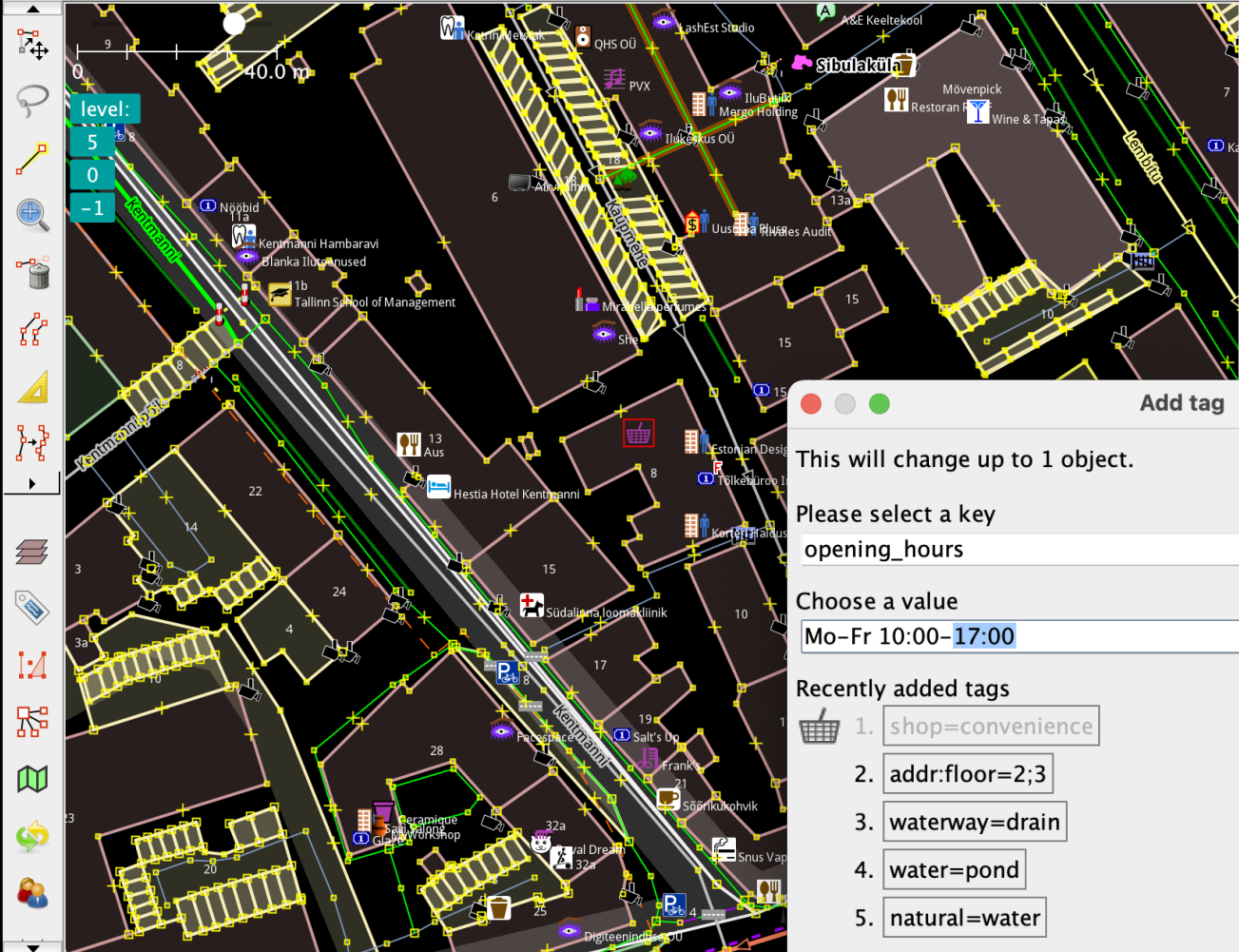


Point of Interest Anyone?

Ilya Zverev
SotM EU 2023







Layers

- [1] Data Layer 1 *

Tags: 1 / Memberships: 0

Shops/Food/Convenience Store ...

Key	Value
shop	convenience

Add tag

This will change up to 1 object.

Please select a key

opening_hours

Choose a value

Mo-Fr 10:00-17:00

Recently added tags

- shop=convenience
- addr:floor=2;3
- waterway=drain
- water=pond
- natural=water

OK Cancel Help

Delete

1

I M

change selection





- 1. insurance «Gan» no 🇫🇷 📞 🏠
- 2. doors «Tryba» no 🇫🇷 📞 🏠
- 3. driving_school «Point Code» no 🇫🇷 📞 🏠
- 4. vending_machine no 🇫🇷 📞 🏠
- 5. vending_machine no 🇫🇷 📞 🏠
- 6. driving_school «Centre d'enseignement routier de l'Isère» no 🇫🇷 📞 🏠
- 7. cinema «Pathé Chavant» no 🇫🇷 📞 🏠
- 8. vending_machine no 🇫🇷 📞 🏠

Library

Place André Malraux

Name
Bibliothèque d'étude et du patrimoine

fr français

12, Boulevard Maréchal Lyautey 10, Boulevard

Tu 10-19
We 10-19
Th 13-19
Fr 10-19
Sa 10-18

yes limited no

public customers no

accepted no

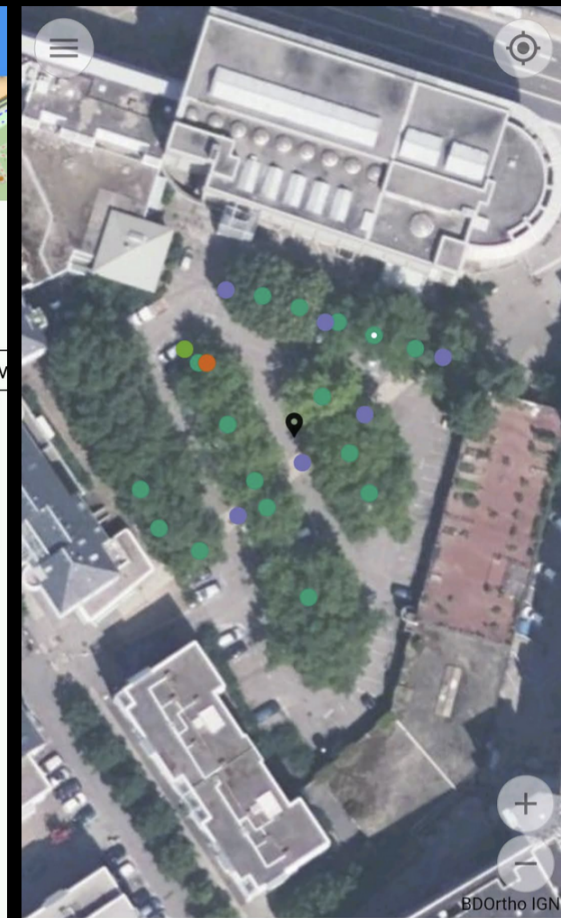
Telephone
+334 76 86 21 00

URL
<https://www.bm-grenoble...>

Email
bm.etude@bm-grenoble.fr

Operator

Save



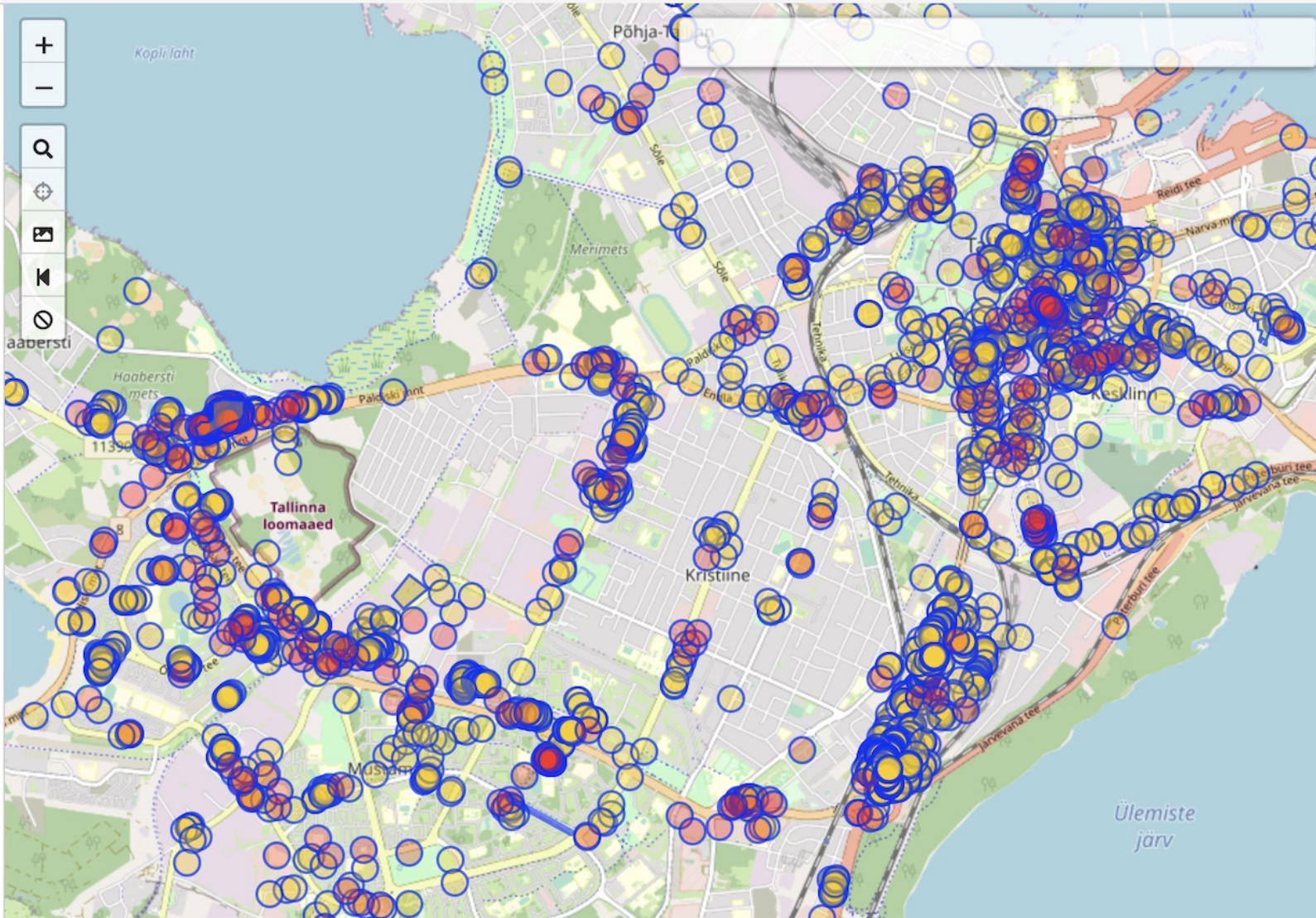
- Tree
- Street Lamp
- Recycling Container
- Waste Basket

Save

```

1 [out:xml][timeout:250];
2 nw["check_date"~"^202[23]"
3 ({{bbox}})];
4 out body;
5 >;
6 out skel qt;

```





Every Door:

1.5 years

3 thousand editors

600 thousand changes



Imports!



Welcome!

The **Import Guidelines**, along with the [Automated Edits code of conduct](#), shall be followed when [importing data](#) from external sources into the [OpenStreetMap](#) database. Imports are planned and executed with more care and sensitivity than other edits, because poor imports have significant impacts on both existing data and local mapping communities. The [Data Working Group](#) is tasked by the OSMF to detect and stop imports that do not comply with these guidelines. Not following these guidelines puts your account at risk of [being blocked](#).

Contents [\[hide\]](#)

1 [Process](#)

1.1 [Step 1 - Prerequisites](#)

1.2 [Step 2 - License approval](#)

1.3 [Step 3 - Documentation](#)

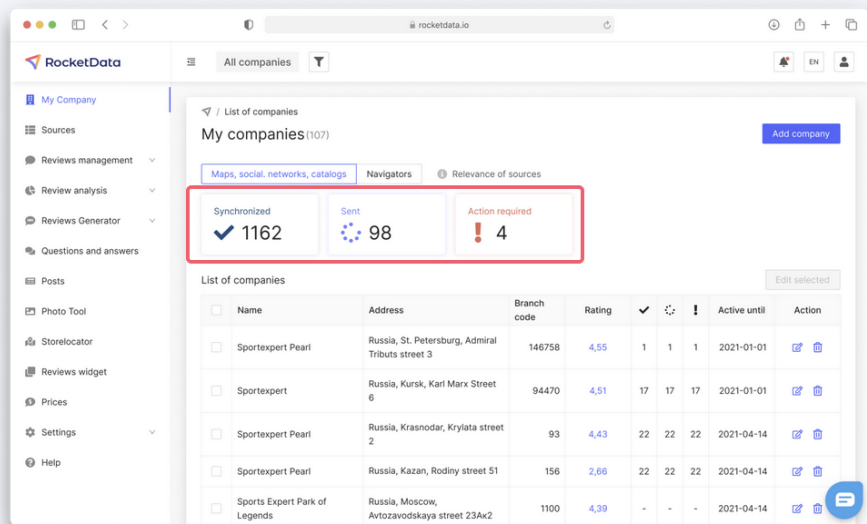
1.4 [Step 4 - Community Buy-in](#)

1.5 [Step 5 - Import Review](#)

1.6 [Step 6 - Uploading](#)

2 [Key considerations](#)

No imports



Official partner of Google,
Apple, Yandex, TomTom,
Here maps



The only official
partner of 2GIS

Step 2. Fast data synchronization with location-based services

- ✓ If the company listing already exists in a location-based service, RocketData updates it and adds the needed data.
- ✓ If there is no listing, RocketData will automatically create a new one.

Despite of how many locations you have — 10, 100 or 10,000 — you can easily manage their data from a single RocketData interface.





On OpenStreetMap

OpenStreetMap is an open, global map used by people around the world to navigate and find local businesses. It's easy and free to get on the map!

Location

Details

Done

We found it! Now fill in the details about your business.

Category

If you don't find a category that suits you, please add further details here.

Help us by filling the complete address (houenumber, post code) or improving the previous one

Street

Housenumber

City

Zip

Name

Phone number

Website

Social Network



OpenStreetMap

Why OpenStreetMap

Why OpenStreetMap

- Provide open map of the world

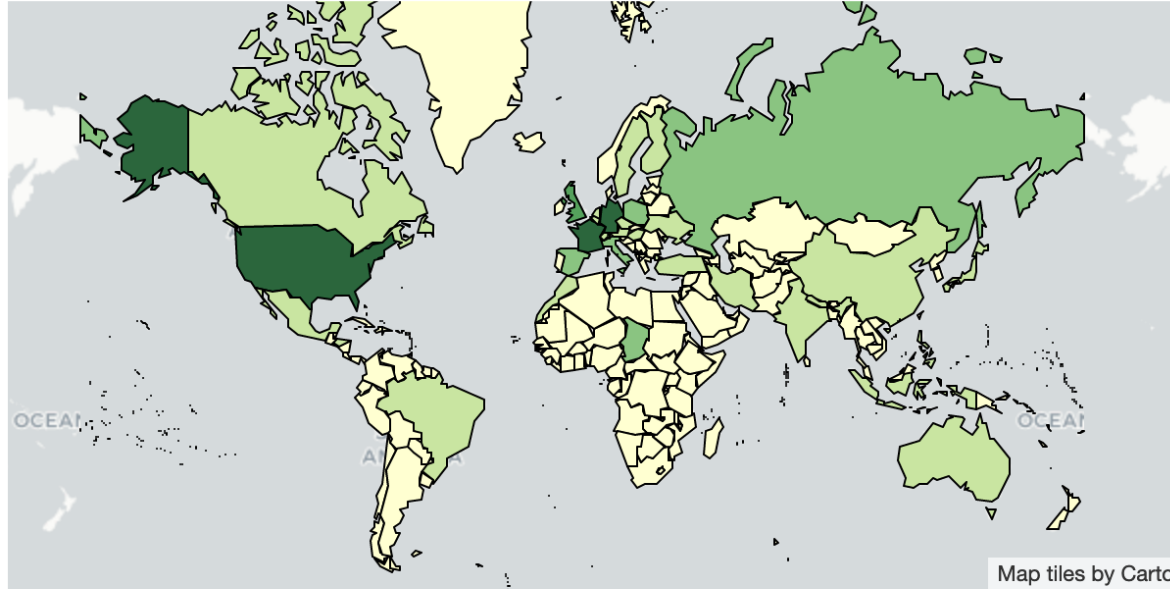
Why OpenStreetMap

- Provide open map of the world
- Have fun mapping



Edits per country for Nov, 07th 2023

Classification by amount of [contributors](#) [contributors per population](#) [contributors per area](#) [mapping activity](#)



Notice: The changeset's bbox center is utilized for counting. This can cause inaccuracies between ~2% and ~10%.

No.	Country	Contributors (organised)	Map changes (organised)	Created	Modified	Deleted
1.	Germany	821 (1%)	130088 (1%)	55275	65085	9728
2.	United States	704 (15%)	364069 (5%)	272347	69703	22019
3.	France	420 (6%)	95296 (9%)	53149	36189	5958
4.	United Kingdom	262 (7%)	92421 (6%)	67179	22086	3156
5.	Italy	247 (2%)	75283 (3%)	50096	19086	6101
6.	Russia	219 (3%)	138762 (6%)	94889	26105	17768
7.	Poland	216 (3%)	76859 (1%)	42125	29265	5469

Information for 'Every Door'

Some used terms: **Every Door**

Number of OSM Contributors: 1,069

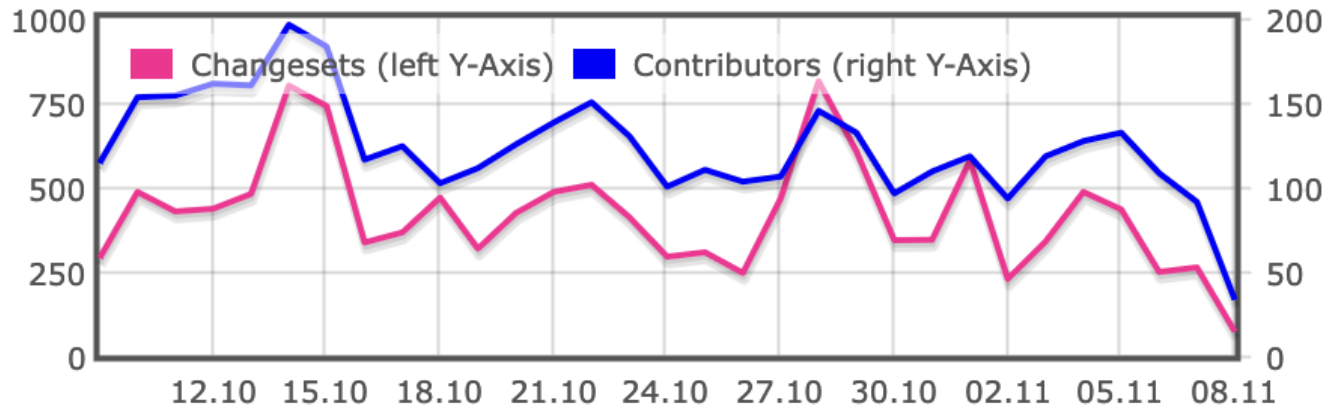
Number of Map Changes: 60,377

Total number of Changesets: 13,016

Displayed Changesets (with >50 & <800 Map Changes): 172

(Limit is 5000 Changesets) hide large Changesets

Number of Changesets and Contributors



by number of users (distinct uids)

editor	2009	2010	2011	2012	2013	2014	2015	2016	2017	2018	2019	2020	2021	2022	2023
iD	-	-	-	-	56 176 (43.6%)	125 149 (80.1%)	133 826 (81.8%)	148 470 (56.7%)	194 572 (61.0%)	214 073 (69.5%)	203 449 (72.2%)	241 205 (79.7%)	239 539 (81.9%)	204 580 (79.1%)	172 132 (75.8%)
	-	-	-	-	-	-	-	7 (~0%)	9 572 (3.0%)	9 764 (3.2%)	8 966 (3.2%)	11 695 (3.9%)	21 935 (7.5%)	23 525 (9.1%)	23 393 (10.3%)
JOSM	13 753 (18.8%)	18 794 (23.6%)	20 210 (21.2%)	23 415 (19.0%)	23 106 (17.9%)	21 830 (14.0%)	22 759 (13.9%)	22 311 (8.5%)	23 190 (7.3%)	22 762 (7.4%)	22 767 (8.1%)	22 028 (7.3%)	21 397 (7.3%)	20 438 (7.9%)	17 220 (7.6%)
MAPS.ME	-	-	-	-	-	-	-	96 584 (36.9%)	102 375 (32.1%)	71 199 (23.1%)	55 719 (19.8%)	35 483 (11.7%)	19 974 (6.8%)	15 515 (6.0%)	13 185 (5.8%)
Organic Maps	-	-	-	-	-	-	-	-	-	-	-	-	3 017 (1.0%)	6 258 (2.4%)	8 465 (3.7%)
Rapid	-	-	-	-	-	-	-	-	-	-	1 105 (0.4%)	3 709 (1.2%)	2 124 (0.7%)	2 183 (0.8%)	8 465 (3.7%)
OsmAnd	-	192 (0.2%)	645 (0.7%)	1 129 (0.9%)	1 653 (1.3%)	1 927 (1.2%)	2 354 (1.4%)	3 538 (1.4%)	4 862 (1.5%)	5 982 (1.9%)	7 063 (2.5%)	6 977 (2.3%)	7 959 (2.7%)	8 623 (3.3%)	7 537 (3.3%)
Vespucci	58 (0.08%)	237 (0.3%)	460 (0.5%)	957 (0.8%)	1 622 (1.3%)	1 801 (1.2%)	2 075 (1.3%)	2 379 (0.9%)	2 920 (0.9%)	3 332 (1.1%)	3 632 (1.3%)	4 314 (1.4%)	4 539 (1.6%)	5 025 (1.9%)	4 711 (2.1%)
Go Map!!	-	-	-	-	2 205 (1.7%)	2 046 (1.3%)	1 335 (0.8%)	1 508 (0.6%)	1 834 (0.6%)	2 687 (0.9%)	3 096 (1.1%)	3 174 (1.0%)	3 762 (1.3%)	3 731 (1.4%)	3 353 (1.5%)
Every Door	-	-	-	-	-	-	-	-	-	-	-	-	-	1 992 (0.8%)	2 812 (1.2%)
StreetComplete EE	-	-	-	-	-	-	-	-	-	-	-	-	-	414 (0.16%)	1 586 (0.7%)
Map builder ↗	-	-	-	-	-	-	-	-	-	-	-	-	1	1 506	1 387

TONDIRABA

Lasnamäe Centrum



MUSTAKIVI

Laagna tee

Laagna tee

Mustakivi tee

Field Mapping Tactics Map

- Commercial data (Google, Overture, TripAdvisor)
- Freshness data from OpenStreetMap
- ...
- PROFIT

Imports

¿ ?



GEO

OSM Conflator

```
source = 'Navads'  
dataset_id = 'navads_shell'  
query = [('amenity', 'fuel')]  
master_tags = ('brand', 'phone', 'opening_hours')  
max_distance = 50  
max_request_boxes = 3
```

```
def dataset(fileobj):
```

```
    import json
```

```
    import codecs
```

```
    import re
```

```
    from collections import defaultdict
```

```
def format_phone(ph):
```

```
    if ph and len(ph) == 13 and ph[:3] == '+44':
```

```
        if (ph[3] == '1' and ph[4] != '1' and ph[5] != '1') or ph[3:7] == '7624':
```

```
            return ' '.join([ph[:3], ph[3:7], ph[7:]])
```

```
        elif ph[3] in ('1', '3', '8', '9'):
```

```
            return ' '.join([ph[:3], ph[3:6], ph[6:9], ph[9:]])
```

```
        else:
```

```
            return ' '.join([ph[:3], ph[3:5], ph[5:9], ph[9:]])
```

```
    return ph
```

```
def make_wd_ranges(r):
```

```
    wd = ['Mo', 'Tu', 'We', 'Th', 'Fr', 'Sa', 'Su']
```

```
    res = wd[r[0]]
```

```
    in_range = False
```

```
    for i in range(1, len(r)+1):
```

```
        if i < len(r) and r[i] == r[i-1] + 1:
```

[← to the project](#), [browse around](#)

Update tags on a [point](#)

You can move the marker to a better location. Imagery may be misaligned. Semi-transparent marker is the location from external dataset.

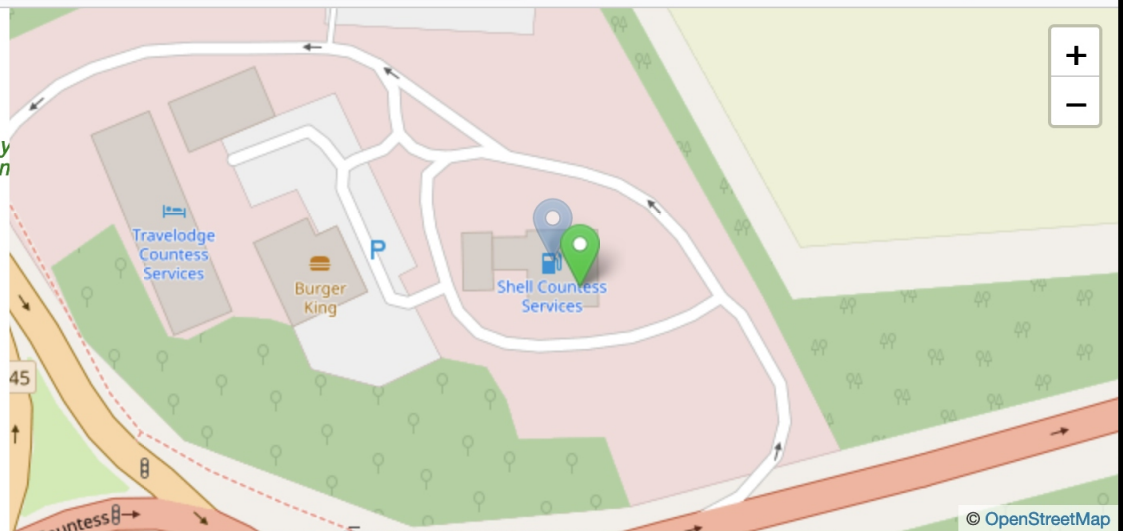
amenity	fuel
name	Shell Countess Services
operator	Shell
ref:navads_shell	NVDS353-10019489
addr:postcode	<i>not set</i> <input type="radio"/>
	SP4 7AS <input checked="" type="radio"/>
brand	<i>not set</i> <input type="radio"/>
	Shell <input checked="" type="radio"/>
opening_hours	<i>not set</i> <input type="radio"/>
	Mo-Su 06:00-22:00 <input checked="" type="radio"/>
phone	<i>not set</i> <input type="radio"/>
	+44 1980 622618 <input type="radio"/>

Value for the fixme tag if needed:

Record changes

Don't Change

Skip



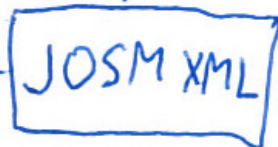
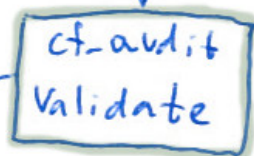
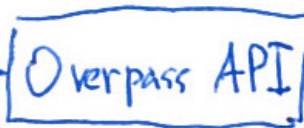
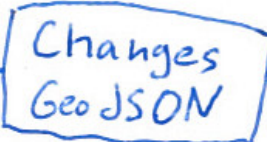
© OpenStreetMap

Bing Mplr

- Bing
- Esri
- MapBox

[Terms & Feedback](#)

CC0, PD or
written
permission!



"cat-move" (-m)

-c

patience

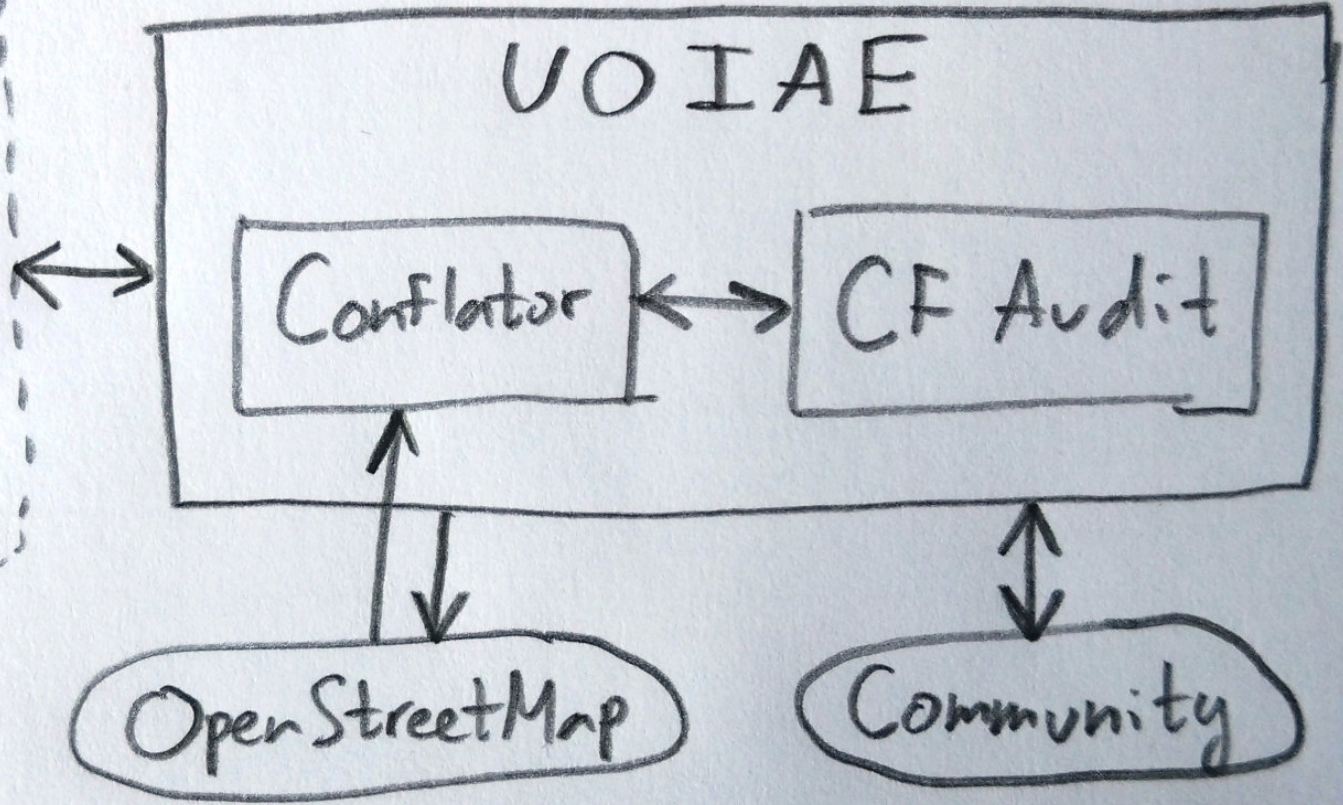
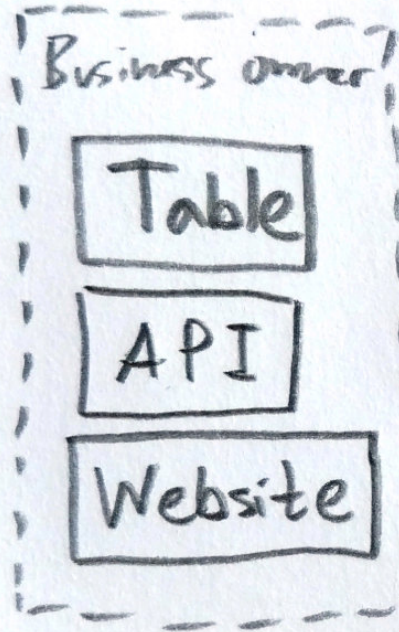
-a

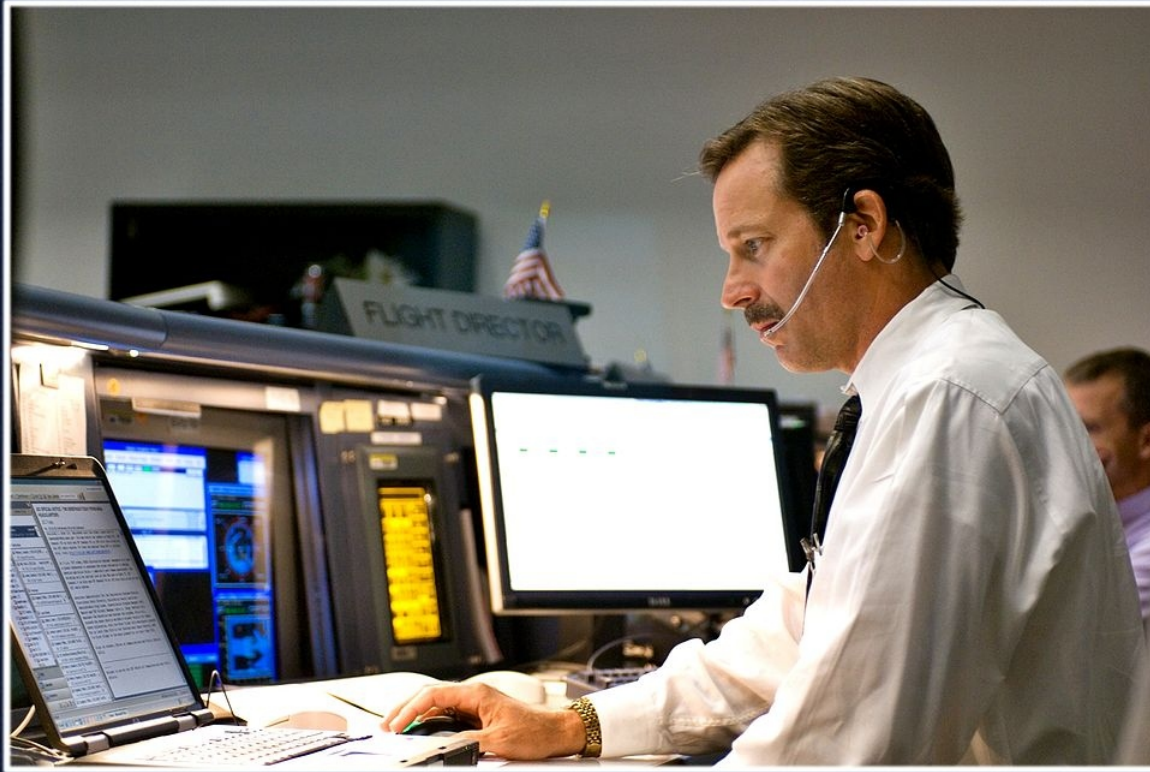
-o

Community

Announce

Universal OSM Ingestion Automation Engine





INTERNET
SERIOUS BUSINESS.

«Open»: not only license

- Open to mappers
- Open to QA
- Open to business

Thank you!

Ilya Zverev
SotM EU 2023