



National Trust | Paths

National Trust



Own / lease 250,000 ha – Largest land owner in the area we operate.

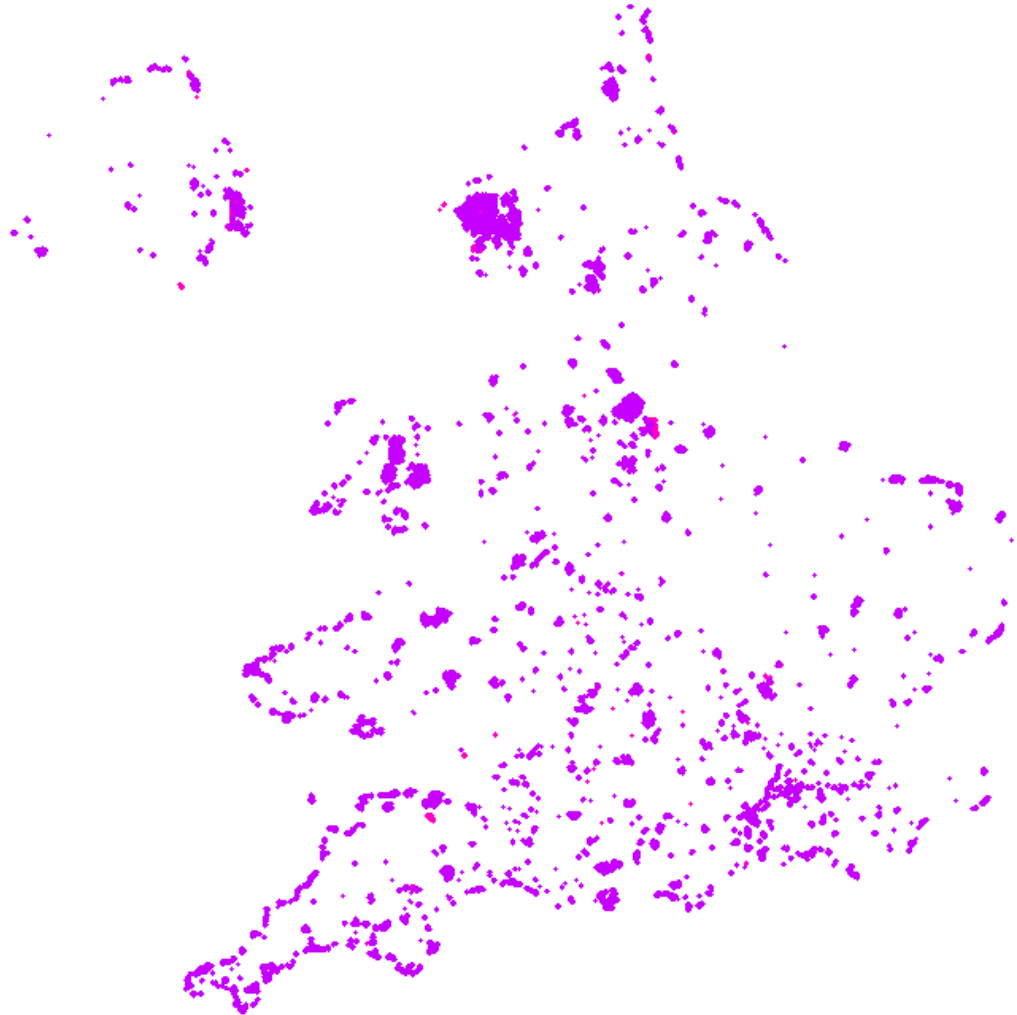
~5,000 Km PROW

~15,000 Km Permissive Paths

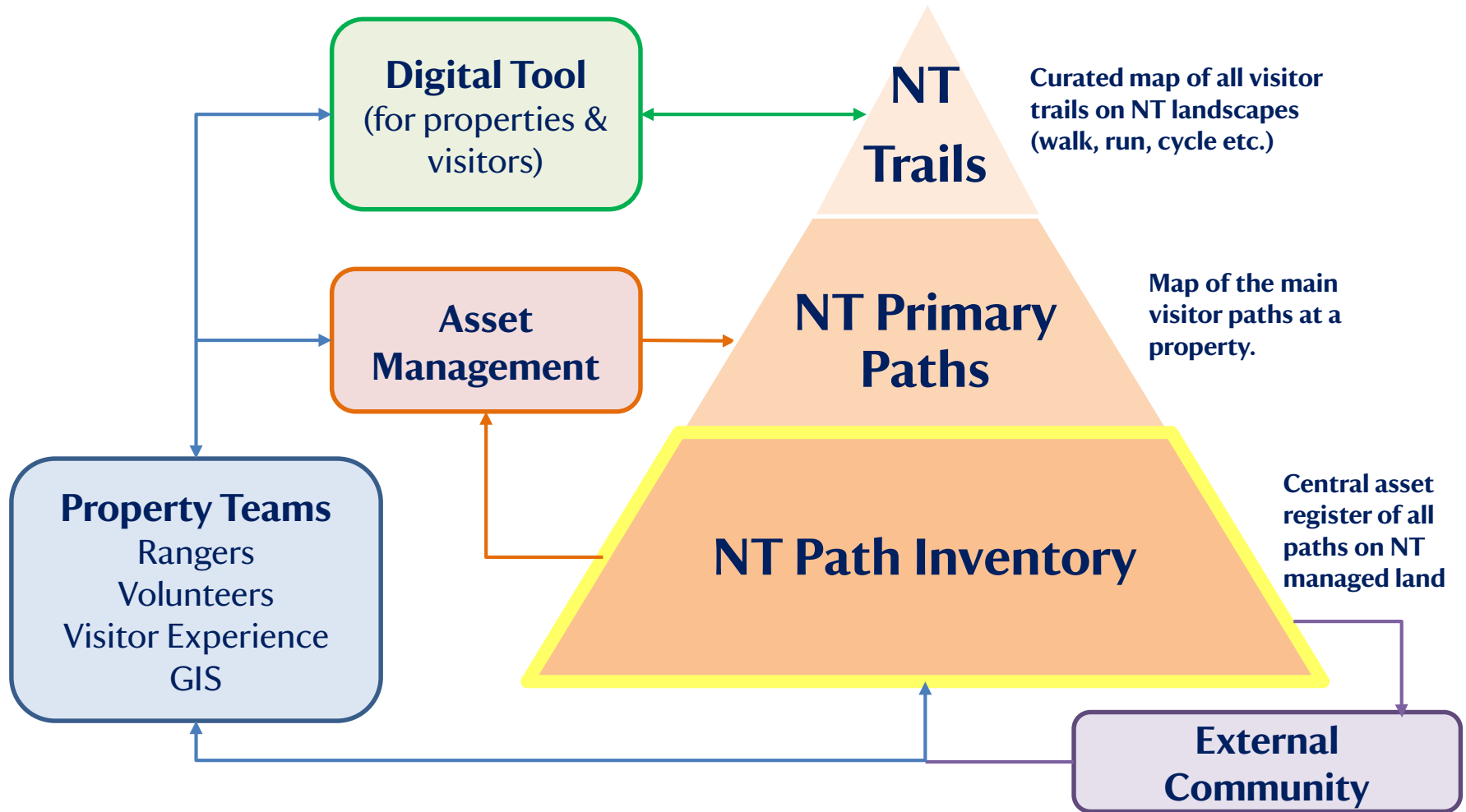
Don't have a paths inventory

Access based organisation

Drive for more Open Data



Path Inventory



Open Paths



National
Trust

‘Open Paths’

Geospatial Commission Crowdsourcing Competition
Create, maintain and publish paths as Open Data.
Crowd source data to provide UK-wide path dataset.
Large land owners / Interest Groups / Downstream Market

Crowd

How to effectively Utilise a
Crowd. UoS

NT Paths

Rule-Based App

Online / offline
1Spatial

Consistency

Establish standard tagging
scheme for recording paths.

Open Data

Master data in
OpenStreetMap.





National
Trust

Proposal

Capture all paths on National Trust owned / leased land into OpenStreetMap

- Amend existing routes.
- Digitise new routes.

Tag consistently

- Access entitlement
- Statutory, Permissive, Customer

Monitor

- Proactively monitor change

Schema



Physical		Access						
highway		designation	foot	horse	bicycle	vehicle	motor_vehicle	
footway/ bridleway/ cycleway/ track/ path/ service/ steps/ no	Public Right of Way	Footpath	public_footpath	designated	permissive/private /no	permissive/private /no	private/no	private/no
		Bridleway	public_bridleway	designated	designated	yes	private/no	private/no
		Restricted Byway	restricted_byway	designated	designated	designated	yes	private/no
		Byway	byway_open_to_all_traffic	designated	designated	designated	yes	yes
	Permissive Access	Permissive Footpath	permissive_footpath, -	permissive	private/no	private/no	private/no	private/no
		Permissive Bridleway	permissive_bridleway, -	permissive	permissive	permissive	private/no	private/no
		Permissive Cycle Path	permissive_cycleway, -	permissive/no	private/no	permissive	private/no	private/no
	Pay for entry routes		-	customers/no	customers/no	customers/no	private/no	private/no
	Access rights unknown		-	unknown/-	unknown/-	unknown/-	unknown/-	unknown/-

Optional descriptive tags:

- `pro_w_ref`, `surface`, `tracktype`, `name`, `wheelchair`, `bridge`, `ford` etc.



Case Studies

Legend

OSM Data

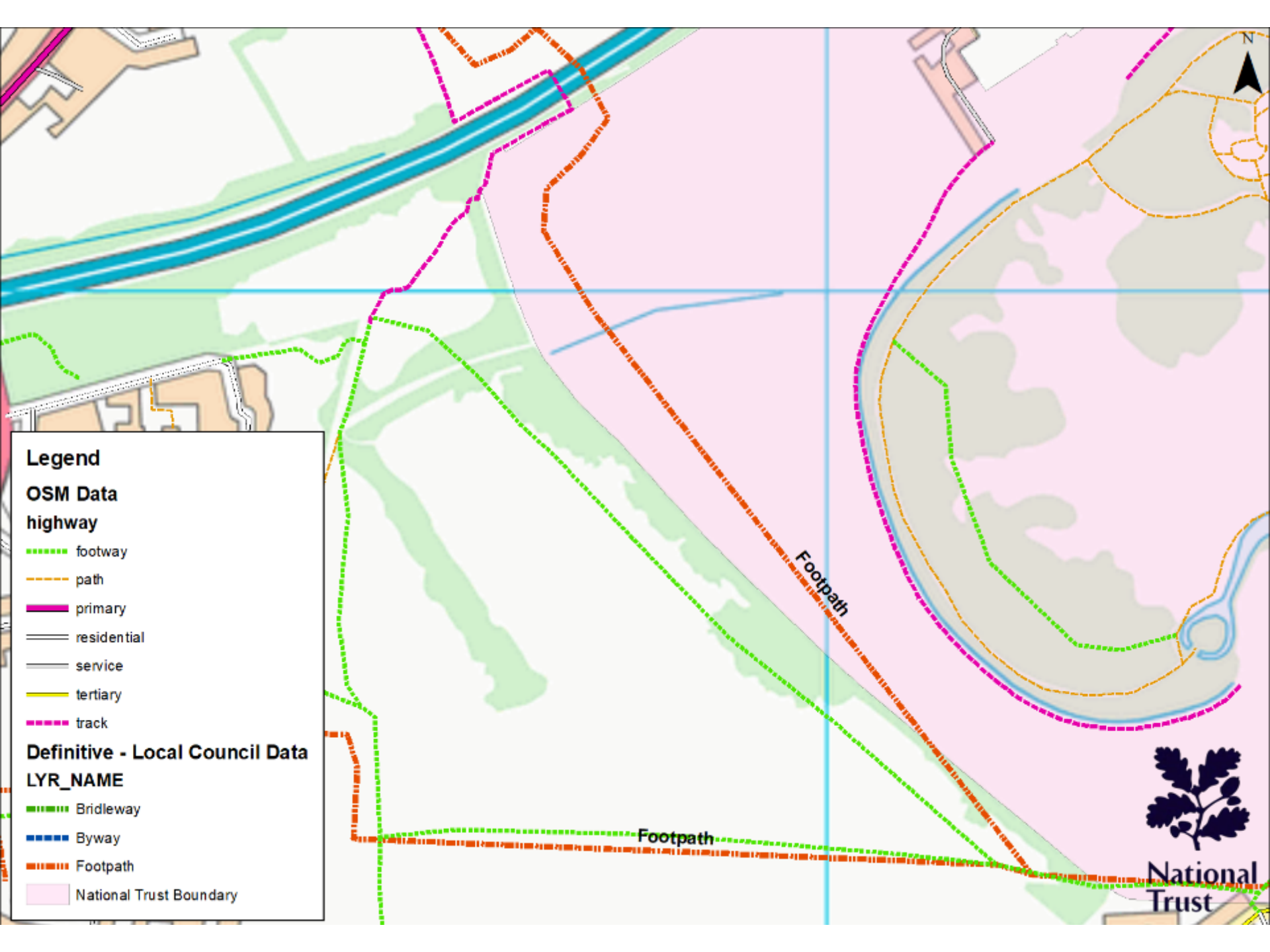
- highway
- bridleway
- footway
- tertiary
- track
- unclassified

Definitive - Local Council Data

LYR_NAME

- Bridleway
- Byway
- Footpath
- National Trust Boundary





Legend





OSM Data

highway

-  footway
-  path
-  primary
-  residential
-  service
-  tertiary
-  track

Definitive - Local Council Data

LYR_NAME

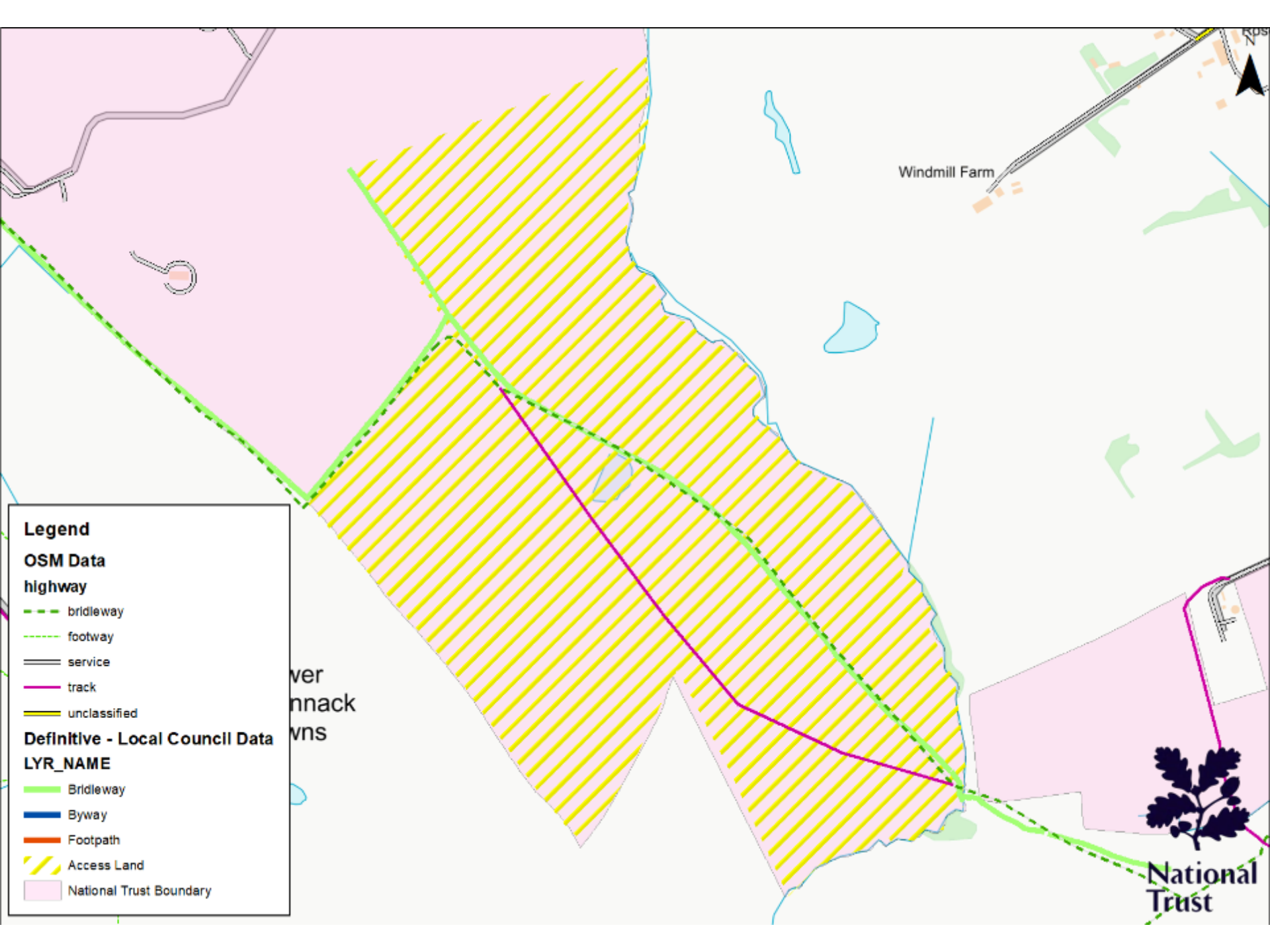
-  Bridleway
-  Byway
-  Footpath
-  National Trust Boundary

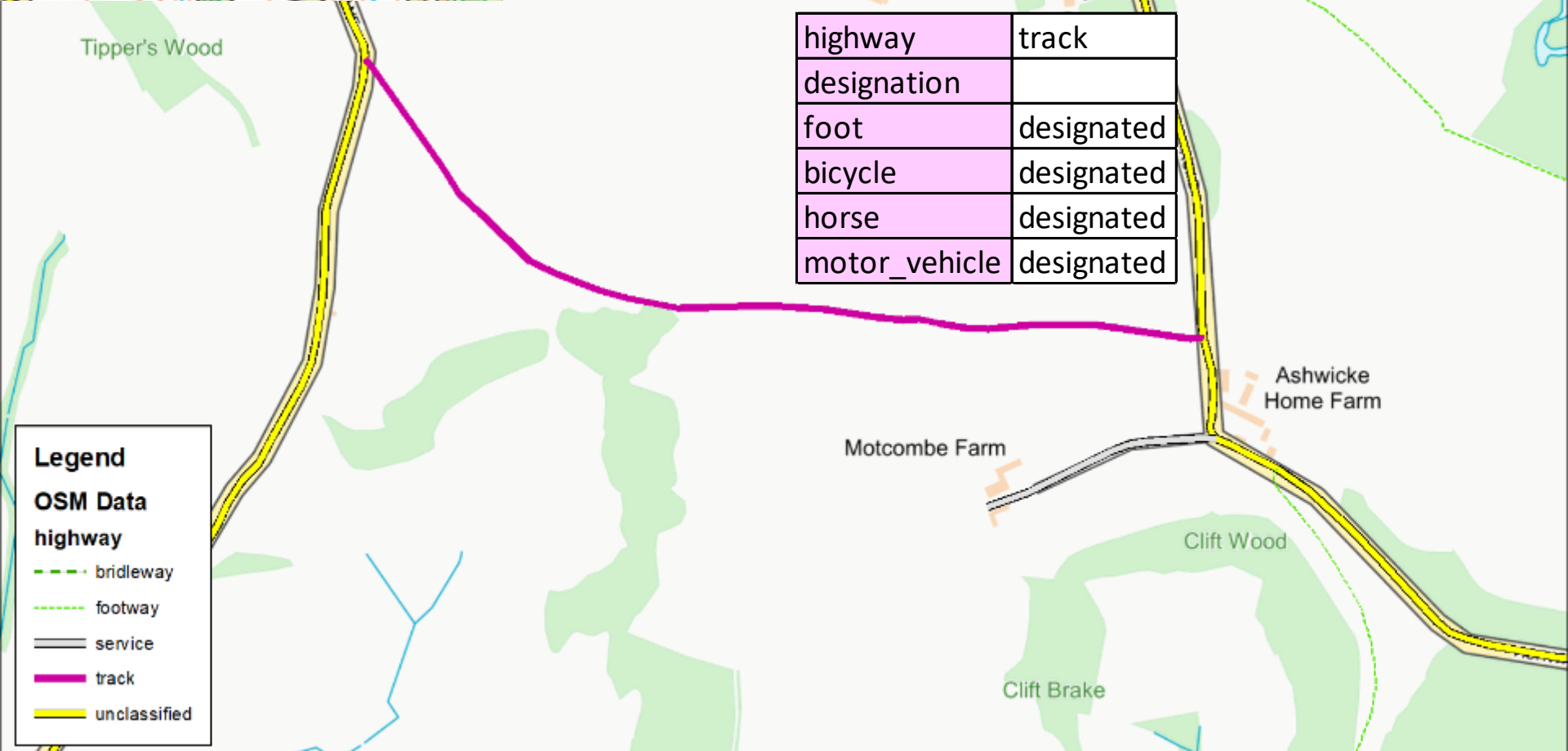
Footpath

Footpath



National Trust





highway	track
designation	
foot	designated
bicycle	designated
horse	designated
motor_vehicle	designated

Legend

OSM Data

highway

- bridleway
- footway
- service
- track
- unclassified

51.4443, -2.3210

51.4408, -2.3092

Car (GraphHopper) Go

[Reverse Directions](#)

Directions

Distance: 1.0km. Time: 0:04.
Ascend: 9m. Descend: 10m.

1. Continue onto Ayford Lane 80m
2. Keep left 900m
3. Turn right onto Ashwicke Road 70m
4. Arrive at destination

Ashwicke Grange

Ashwicke Road

National Trust



Project Timeline

Summer 2019

- 16 'Pioneer Properties' – Variety.
 - Trial methods, assess volume.
- Property Team/Volunteer editor trial.

**Autumn/Winter
2019**

- Lessons learnt.
 - Refine processes, develop guidance.
- Recruit editors.

**Spring/Summer
2020**

- Launch wide-scale path data capture.
 - Property Teams.
 - Volunteers (NT, OSM).

Implications and Challenges



National
Trust

Crowd Editing

Splitting Objects

Licensing

**Consistency &
Monitoring**



National
Trust



Q&A