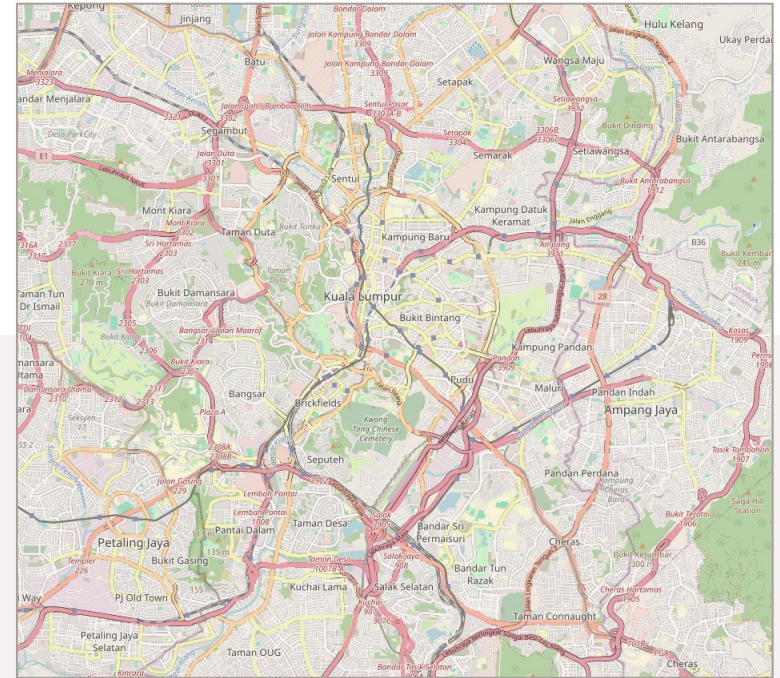


Public Transport Data Kuala Lumpur



Hello!

I am Nabil Eryad. Malaysian OSM mapper.

<https://www.openstreetmap.org/user/nabilersyad>

nabil.ersyad@yahoo.com

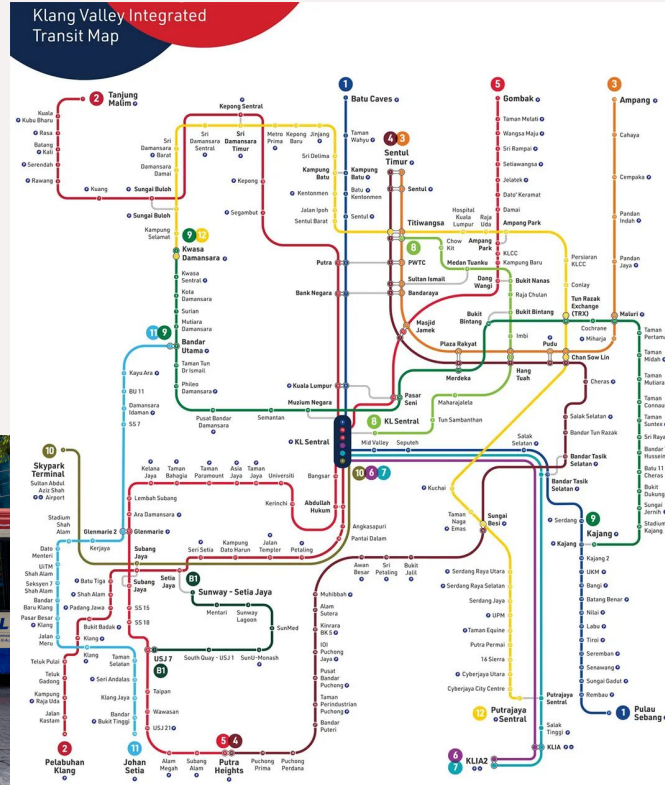
<https://www.linkedin.com/in/nabilersyad/>



Klang Valley Integrated Transit System

Bus Lines details

- 8 bus corridors
- Around 337 bus routes
- Over 800 busses
- 10 operators



Train lines

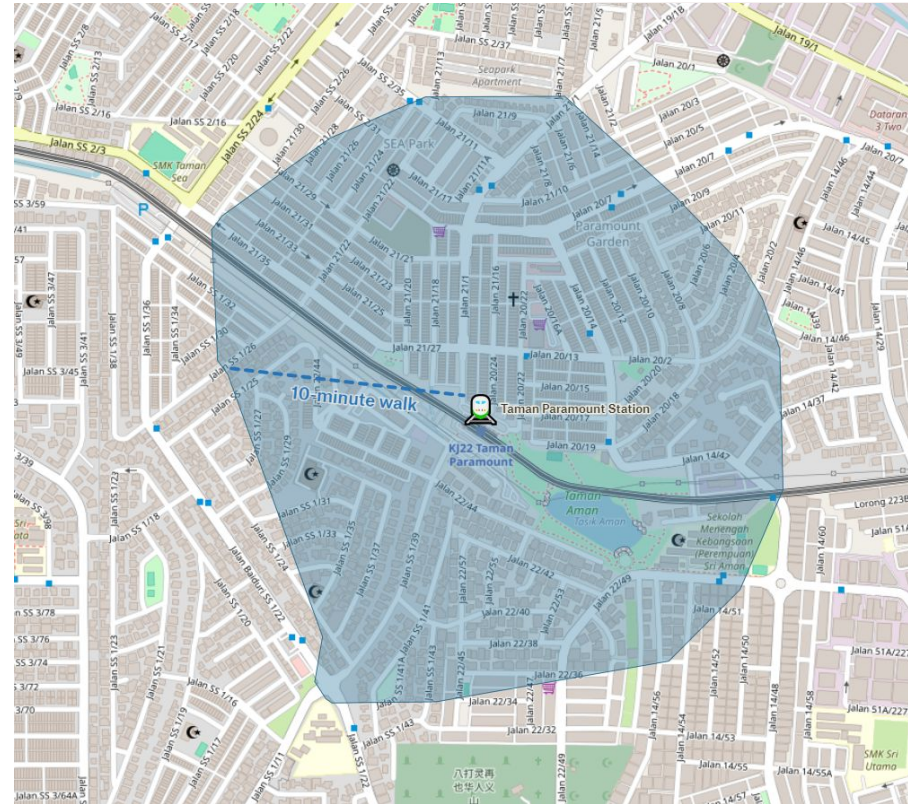
- 12 Lines
- 177 stations
- 555.7km of rail coverage



My Experience with OSM

Public Transport Accessibility Study

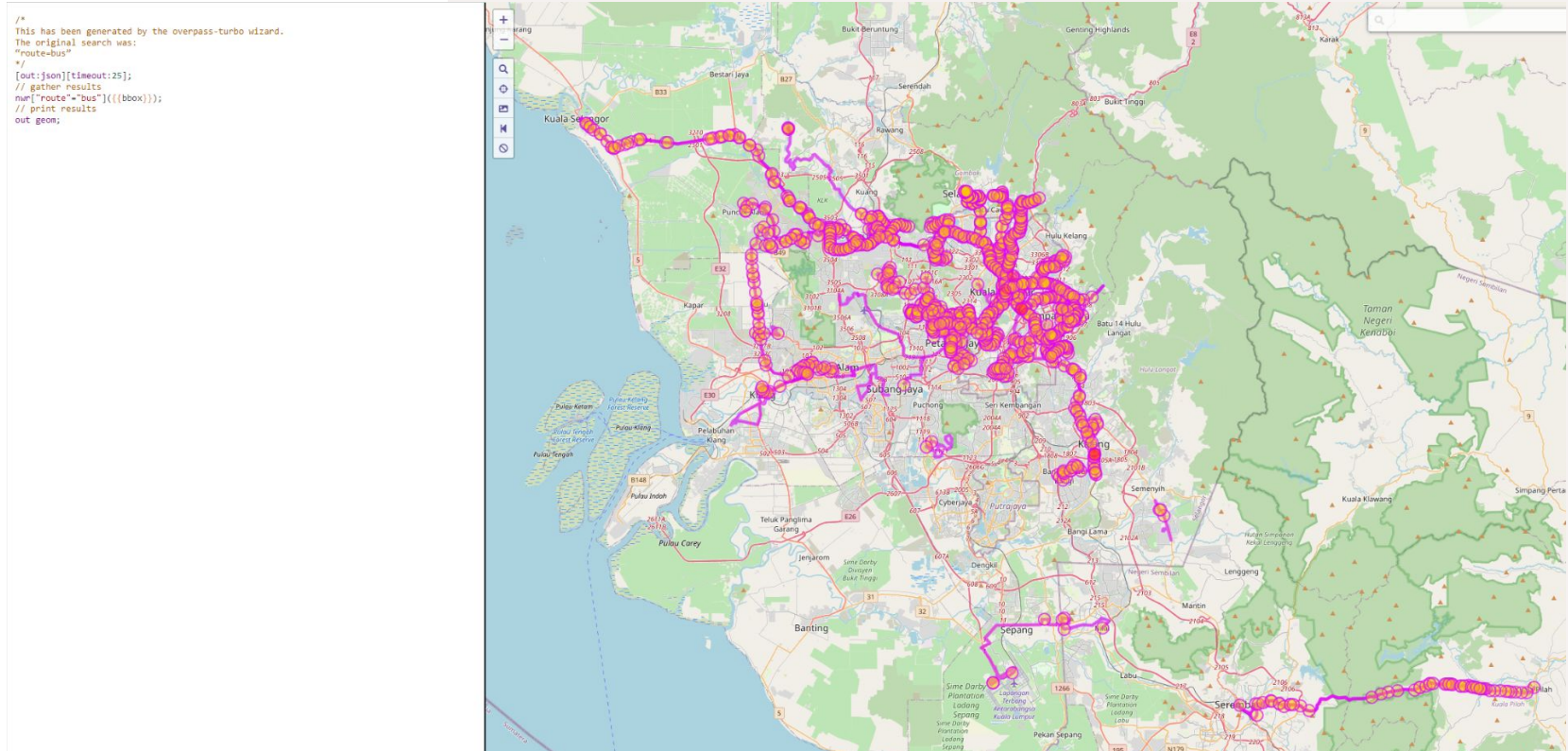
- My first experience of using OSM-sourced data
- A study of train station pedestrian accessibility
- Used openrouteservices to map isochrones that visualizes how far can you walk within a timeframe from a single point



<https://openrouteservice.org/>

Query Example with OSM

Klang Valley Bus Routes Mapped in OSM



Improving Bus Route Data - Reference

Current state of bus network mapping [\[edit | edit source \]](#)

Listed by operators then route numbers. You can change sorting by clicking on the column headers. T101 (loop) and 421 (2 termini) can be your reference. The current route to be input can refer to [w:ms:Senarai laluan bas di Lembah Klang](#)

Ref	Name	Network	Operator	Route master	Routes	Status	Notes
100	100: Hab Lebu Pudu → Kuala Selangor	Selangor Omnibus	Causeway Link	15880194	East 15821962 West 15817100		Needs checking
107	107: Hab Lebu Pudu → Bestari Jaya	Selangor Omnibus	Causeway Link	0	North 0 South 2662848		Need checking. One way with gaps.
151	151: Bandar Baru Selayang → Hab Lebu Pudu	Rapid KL Bus	Rapid Bus	0	1 - 2 0 2 - 1 1827202		Bus stops pending to add
170	170: Hab Wira Damai ↻ Stesen LRT Sentul	Rapid KL Bus	Rapid Bus	N/A for loop	Loop 14965387		Surveyed on 3 December 2022, now extended to MRT Titivangsa
173	173: Taman Jasa Utama → Lebu Ampang	Rapid KL Bus	Rapid Bus	0	1 - 2 0 2 - 1 1827205		Need checking.
200	200: UIA Gombak ↻ Sogo KL	Rapid KL Bus	Rapid Bus	N/A for loop	Loop 16390745		Surveyed on 28 September 2023
300	300: HAB Pandan Indah ↻ Lebu Ampang	Rapid KL Bus	Rapid Bus	N/A for loop	16090577		Need checking.
302	302: Titivangsa ↻ KLCC	Rapid KL Bus	Rapid Bus	N/A for loop	Loop 3031365		
400	400: Damai Perdana → Hab Lebu Pudu	Rapid KL Bus	Rapid Bus	0	1 - 2 1827216 2 - 1 0		Need checking.

OSM Wiki As Main Reference Point

- A guide on how to map bus routes in Klang Valley
- A reference of the current state of bus network mapping
- Credit to local users for establishing including
 - Angys
 - Sabre23t

https://wiki.openstreetmap.org/wiki/Bus_routes_in_Klang_Valley

Bus routes in Klang Valley

This article lists bus routes in Klang Valley, Malaysia. Many bus stops are mapped but the route relation is missing.

Contents [hide]

- Tagging
 - Relation type=route_master
 - Relation type=route
 - Bus stops
- Current state of bus network mapping
- Legends for Symbols & Colours
- See also

Tagging [\[edit | edit source \]](#)

This is only a suggestion based on the Public transport tagging schema. Please also refer to PTV2 in Public_transport and Buses for detail.

[Relation type=route_master](#) [\[edit | edit source \]](#)

Key	Value
name	Indicate the termini which the bus operates. Example: "421: Taman Dagang (left direction or the top in kiosk website, where ID: XXX(1)) → Bukit Bintang" (Standard format through Telegram community discussion group ^{id} , for a roundtrip, can use ↻ instead of the arrow) No need to include via to make the name short, only terminus are listed.
network	Rapid KL Bus (Other examples include MRT Feeder Bus / LRT Feeder Bus / PJ City Bus / Smart Selangor Bus)
operator	Rapid Bus (also valid for MRT/LRT feeder bus / PJ City Bus / Nadi Putra and Smart Selangor routes under Rapid KL) / DBKL (GOKL City Bus) / Selangor Omnibus / Smart Selangor / MARA Liner / Causeway Link / Wawasan Sutera
public_transport:version	2
ref	Line number. Example: "421".
route_master	bus
type	route_master

Improving Bus Route Data - How I Contribute

Steps

1. Ride a bus on a chosen bus route
2. Turn on GPS tracking app (Trails)
3. Take note of bus stops along the route
4. Upload GPS trace into OSM
5. Map routes using GPS trace and OSM Wiki as reference
6. Update progress in OSM Wiki



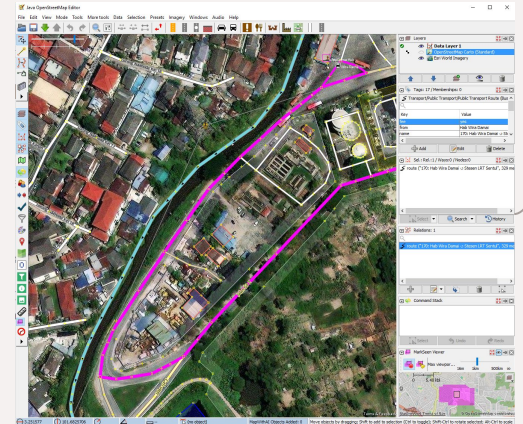
<https://trails.io/en/>

Viewing trace 300_Bus_Pandan_to_KL.gpx

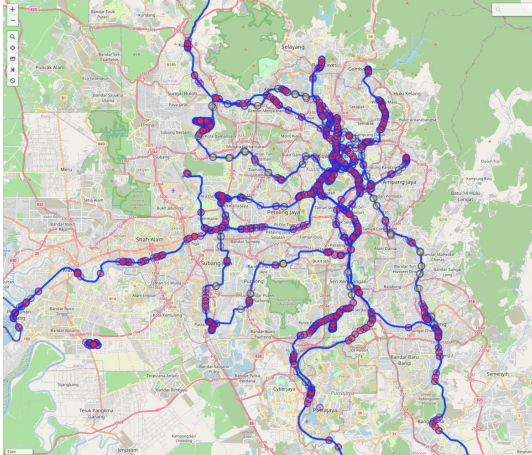


Filename: 300_Bus_Pandan_to_KL.gpx (download)
Uploaded: 18 November 2023 at 08:29
Points: 1,081
Start coordinate: 3.133866; 101.75682 (map / edit)
Owner: nabinyasid
Description: 300 Bus Pandan to KL
Tags: Bus
Visibility: Public (shown in trace list and as anonymous, unordered points)

[Edit this trace](#) [Delete this trace](#)



Improving Public Transport Data – How Others Contribute



Train Network Data

- All 12 lines have been mapped by various members of the community
- 2 future lines have also been mapped as under-construction tags

Mapillary

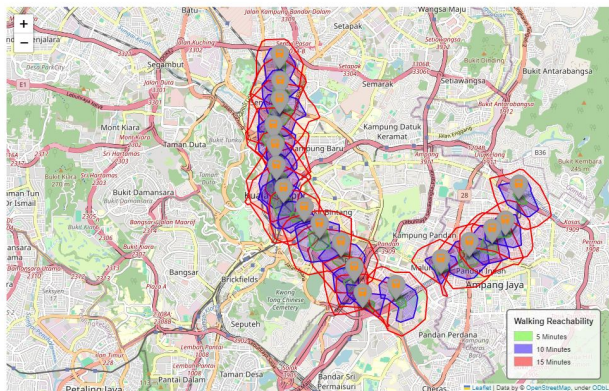
- User Zh9567 has captured imagery of all driverless train lines
- <https://www.mapillary.com/app/?lat=3.1880377000013&lng=101.5785974&z=17&pKey=9659548377988182&focus-photo>



Future Possibilities

The screenshot shows the data.gov.my website interface. At the top, there's a search bar and navigation links. The main content area is titled "GTFS Realtime API Endpoint" and includes a code block for the API URL: `GET https://api.data.gov.my/gtfs-realtime/feeds/agency`. Below this, there's a section "What does GTFS Realtime do?" and "Important note: We are building iteratively". The note states that this is the first time Malaysia has an official and freely-usable GTFS API, and it's the result of months of hard work and collaboration. It also mentions that the API is not yet complete and that developers should be aware of its current limitations.

Klang Valley Train Stations Isochrone Data



data.gov.my

- Public repository of open data released by the government
- Combine the publicly available GTFS-R schedule data with OSM physical data to develop locally-borne user applications
- <https://developer.data.gov.my/realtime-api/gtfs-realtime>

Further studies

- Expand OSM's role as a key datasource to study cities
 - Accessibility
 - Transport Planning
- Complete tagging of public transport infrastructure for details including lighting, shelter and corridors.

Thank you!